

LIFELIGHT TRACK MOUNT



Arhitectural Track Mounted Emergency Light

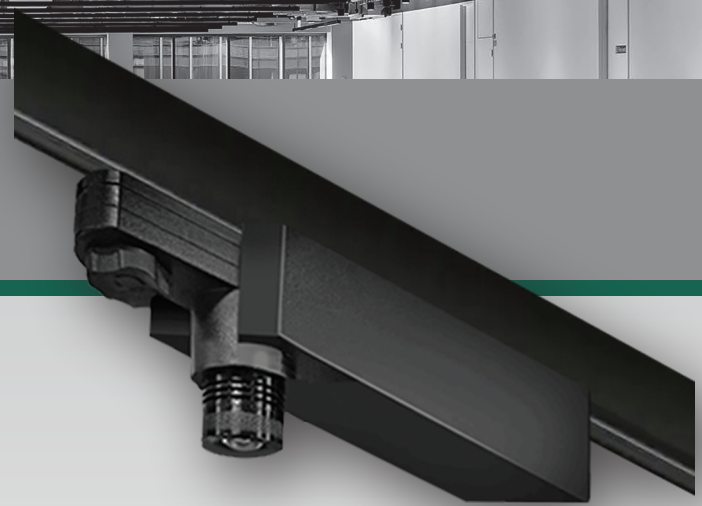
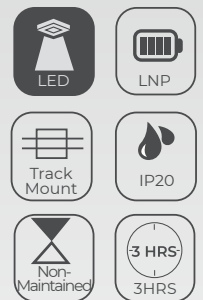
The Lifelight Track Mount emergency luminaire is designed for effortless integration into Stucchi tracks, blending seamlessly into any environment where aesthetics is important. Engineered to deliver exceptional performance, and powered by a long lasting Clevertronics L10 battery, it delivers reliability and compliance in critical situations.

Applications

- | | |
|---|--|
|  Office Buildings |  Showrooms |
|  Galleries |  Retail Outlets |
|  Apartments |  Theatres |

Features and Benefits

- Tested to BS EN 60598-2-22
- Sleek architectural design
- Fits Stucchi 3 & 6 circuit tracks
- Lithium Nanophosphate® battery
- DALI and Zoneworks test options



LIFELIGHT TRACK MOUNT

ORDERING INFORMATION		EMERGENCY (L10)	
Colour		White	Black
Standard		LLIFE-TRACK-WHT	LLIFE-TRACK-BLK
Clevertest Plus System Compatible		Yes	
DALI*		LLIFE-TRACK-D2-WHT	LLIFE-TRACK-D2-BLK
Zoneworks® XT Hive*		LLIFE-TRACK-HVG-WHT	LLIFE-TRACK-HVG-BLK
Carton Quantity		1 Piece	
Weight - Single (Carton)		0.7kg	
Dimensions (L x H x D)		230mm x 100mm x 70mm	

POWER, LAMPS AND BATTERY		EMERGENCY (L10)	
Power Consumption (Standby / Max)		0.5W / 2.5W	
Lamp(s)		1 x LED	
Battery		Lithium Nanophosphate®	
Voltage (V) / Capacity (mAh)		3.3V / 2500mAh	
Charging Method		Intelligent Current Limited Constant Voltage	

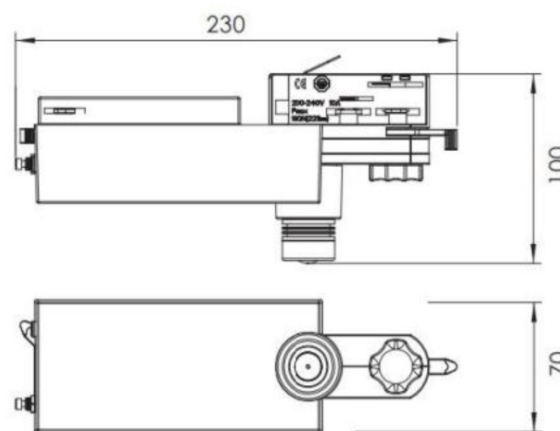
TECHNICAL SPECIFICATIONS		EMERGENCY (L10)	
Construction - Body		Polycarbonate enclosure with Stucchi track adapter	
Operating Mode		Non-maintained	
Voltage (V) Frequency (Hz)		220-240V (50Hz)	
Operating Temperature		0°C to 40°C	
Ingress Protection Rating (IP)		IP20	

LUMINAIRE CLASSIFICATION		EMERGENCY (L10)			
Without Automatic Testing		X	0	AD	180
With Automatic Testing		X	0	ADF	180

1 LUX SPACING TABLE AND MOUNTING HEIGHTS						
CEILING MOUNTING HEIGHT (M)	Escape Routes 1 Lux min. along centre line					
	Axial Spacing	Transverse Spacing	Axial to Wall	Transverse to Wall		
					L10	L10
2.7	10.1	10.1	3.0	3.0		
3	10.3	10.3	3.6	3.6		
4	11.0	11.0	3.6	3.6		
5	11.5	11.5	3.6	3.6		

0.5 LUX SPACING TABLE AND MOUNTING HEIGHTS						
CEILING MOUNTING HEIGHT (M)	Open (Anti-panic) Areas 0.5 Lux min. within core area Luminaires arranged in a regular array					
	Axial Spacing	Transverse Spacing	Axial to Wall	Transverse to Wall		
					L10	L10
2.7	10.0	10.6	3.0	3.5		
3	10.8	11.1	3.2	3.5		
4	12.4	12.8	3.2	3.5		
5	13.4	13.9	3.2	4.0		

PROTECTION
Battery overvoltage & overcurrent protection
Battery deep discharge protection
Supply voltage polarity reversal protection
Battery short-circuit protection (charging will resume upon removal of fault)



Dimensions (mm)

*Warranty information located at: <https://clevertronics.co.uk/product-warranty-statement/>
The product details described in this document are current as at the version date of the document. We reserve the right to change product design, specifications or materials (Specifications) as part of our continuous improvement program. Please confirm the applicable Specifications at the time of placing your order.

clevertronics.co.uk

4 Longwalk Road, Stockley Park, Uxbridge UB11 1FE
Clevertronics International UK Ltd trading as Clevertronics, with registered number 11249539, whose registered office is at 843 Finchley Road London NW11 8NA. _UK Lifelight Track Mount

